



# WAGNER INSTRUMENTS

POST OFFICE BOX 1217

GREENWICH, CT 06836 - 1217 U.S.A ☎(203) 698-9681

## INSTRUCTIONS/ FDIX – “Memory To File” – Upload Utility

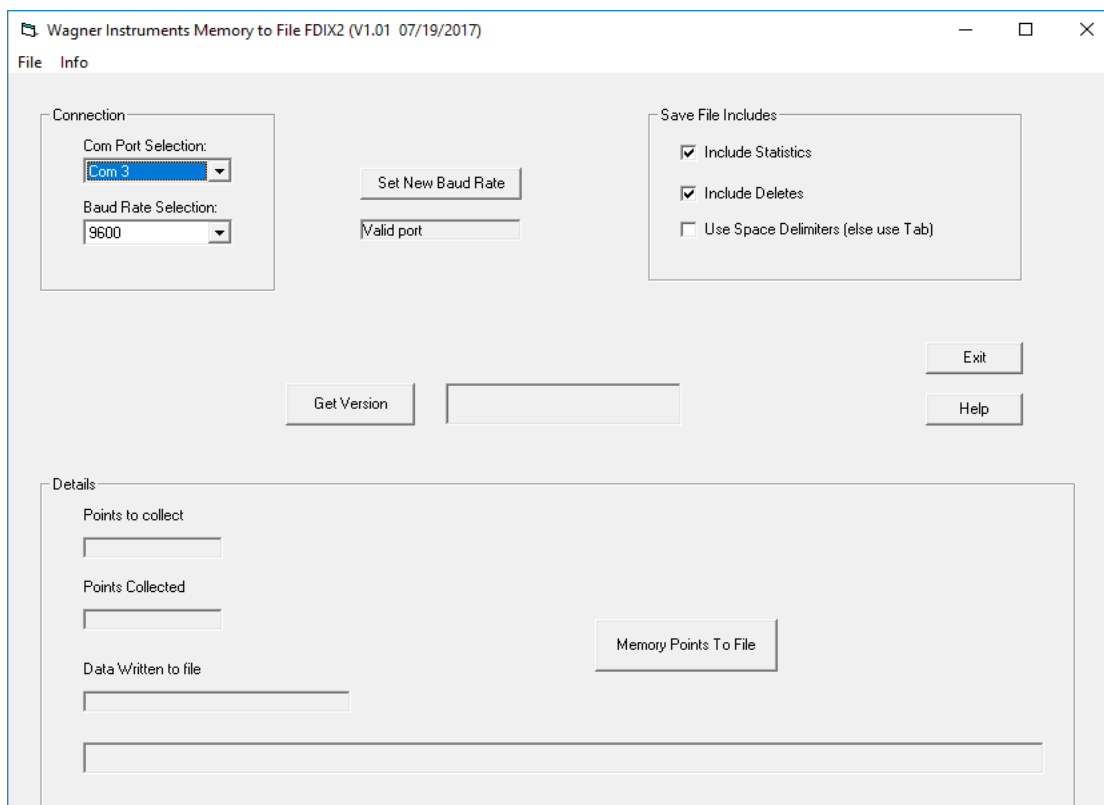
2/28/18

### I. GENERAL

The Wagner Instruments “Memory To File” application is used to upload stored data points from the FDIX Force Gage (firmware version 6.5 or higher) to a Windows based laptop or PC.

### II. INSTALLATION & LAUNCH

- > Download the FDIX “Memory To File” application (FDIX\_Memory To File\_Application.zip) from the “Downloads” area of the Wagner Instruments website:  
[www.wagnerinstruments.com](http://www.wagnerinstruments.com). Save the file.
- > Unzip “Memory To File” folder.
- > Click on “setup.exe” and follow the installation instructions. In general, the proposed defaults are suitable.
- > Launch the “Wagner Instruments Memory to File” application.



## **INSTRUCTIONS/ FDIX – “Memory To File” – Upload Utility (continued)**

### **III. SET COM PORT AND BAUD RATE**

Set the application to the FDIX port and baud rate using the Com Port Selection and Baud rate pull down selection boxes. After selection click on “Set New Baud Rate”. Text below should display “Valid port”.

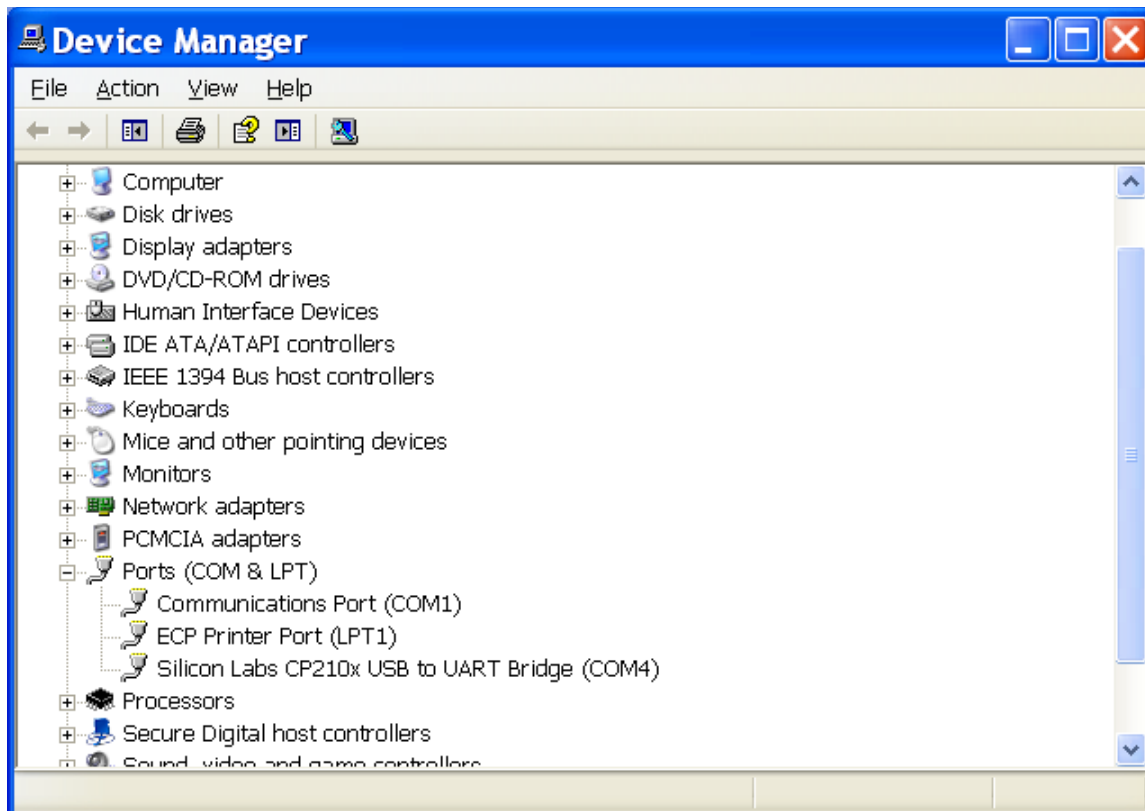
> To find correct COM Port setting, go to Start-> Control Panel-> System-> Hardware Tab-> Device Manager

OR

> For Win 10, type “Device Manager” in Win 10 search box and select “Device Manager”.

> Expand Ports (COM & LPT).

> COM Port number will be displayed in the “Ports” descriptor message.



> In this case, the gage COM port is COM4.

> Set baud rate to 9600 (FDIX factory default).

## INSTRUCTIONS/ FDIX – “Memory To File” – Upload Utility (continued)

### IV. VERIFY CONNECTION

Verify connection to FDIX by clicking on “Get Version”.

The FDIX version must be V 6 5 0 or greater.

The screenshot shows the 'Wagner Instruments Memory to File FDIX2 (V1.01 07/19/2017)' application window. It features a menu bar with 'File' and 'Info'. The main interface is divided into several sections:

- Connection:** Contains a 'Com Port Selection' dropdown menu set to 'Com 3', a 'Baud Rate Selection' dropdown menu set to '9600', a 'Set New Baud Rate' button, and a 'Valid port' text field.
- Save File Includes:** A group box containing three checkboxes: 'Include Statistics' (checked), 'Include Deletes' (checked), and 'Use Space Delimiters (else use Tab)' (unchecked).
- Buttons:** 'Exit' and 'Help' buttons are located on the right side. A 'Get Version' button is located in the center, next to a text field displaying 'V6.50D 02/21/18'.
- Details:** A large section at the bottom containing:
  - 'Points to collect' and 'Points Collected' text labels, each followed by an empty text input field.
  - 'Data Written to file' text label followed by an empty text input field.
  - A 'Memory Points To File' button.
  - A long, empty horizontal text input field at the bottom.

### V. SET PARAMETERS FOR DATA INCLUSION

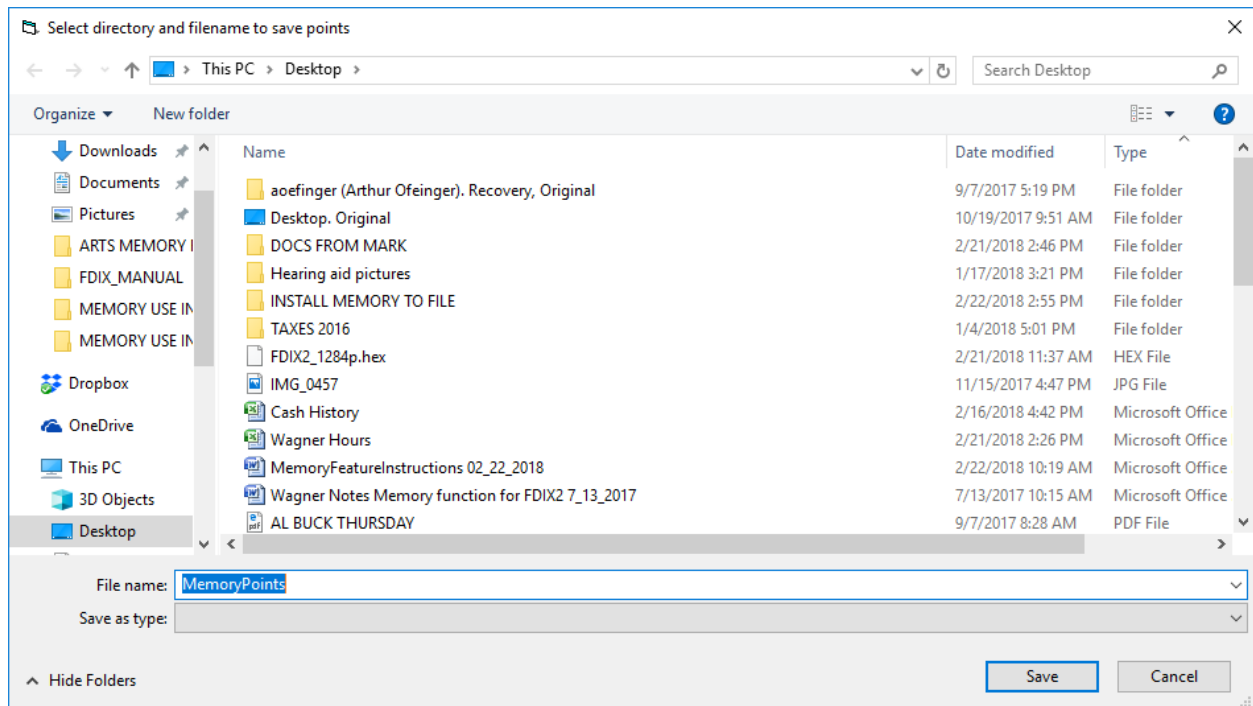
Select the relevant check boxes for upload inclusion.

- > Include Statistics
- > Include Deletes
- > Use Space Delimiters --  
(Leave unchecked for Tab Delimiter, recommended for possible import into Excel).

## INSTRUCTIONS/ FDIX – “Memory To File” – Upload Utility (continued)

### VI. SEND DATA TO FILE

- > Click on “Memory Points to File”.

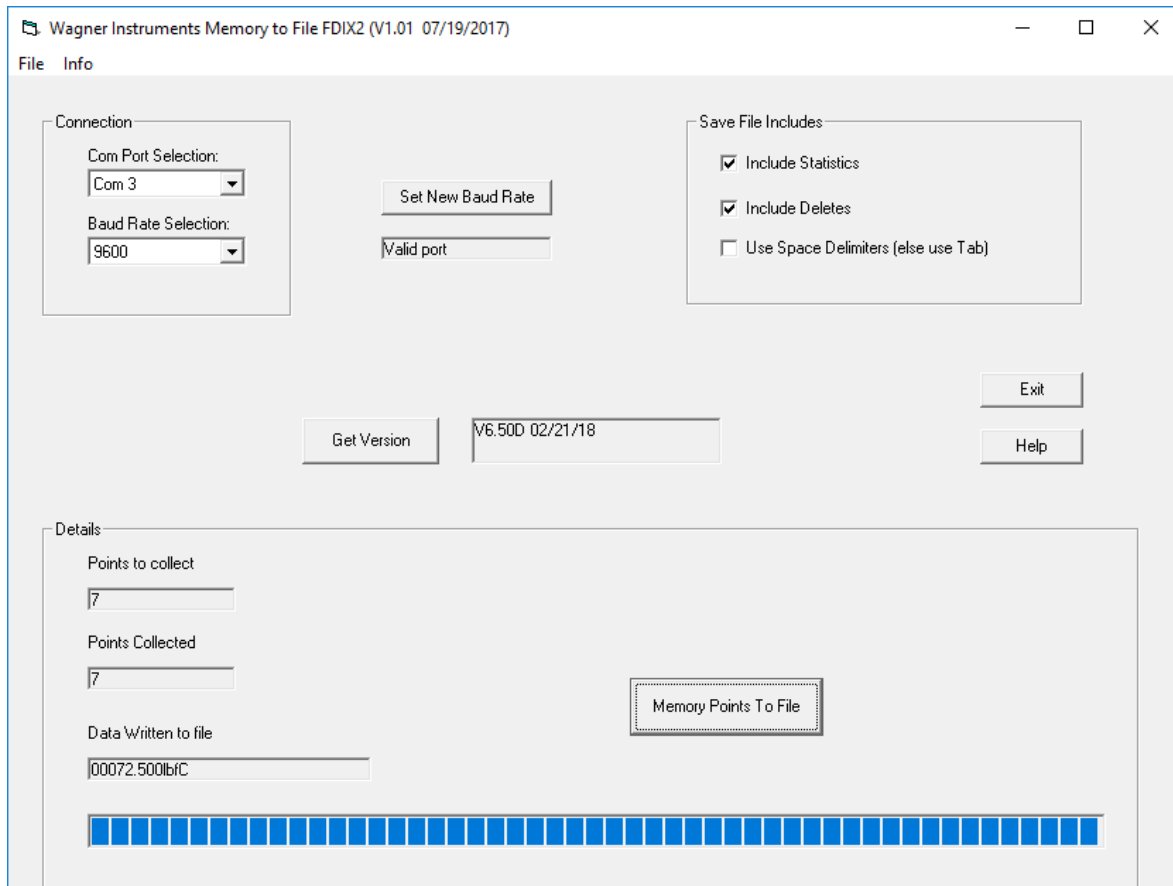


- > File name dialog box appears. Enter the name and subdirectory of the destination file. Click the “Save” dialog box.

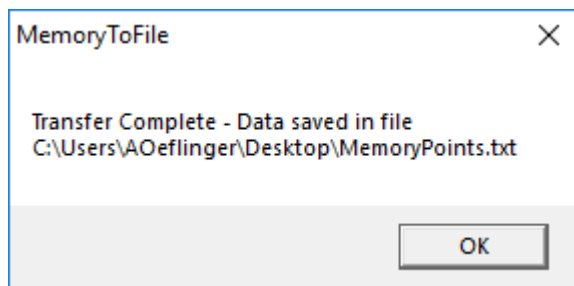
## INSTRUCTIONS/ FDIX – “Memory To File” – Upload Utility (continued)

### VI. SEND DATA TO FILE (continued).

- > Data is uploaded. Progress bar indicates progress of upload.



- > When complete, “Points to collect” and “Points Collected” are updated.
- > Completion dialog box is displayed.
- > Path of saved file is displayed in this dialog box.



- > Memory has been saved to specified file.

File name: FDIX\_Instructions\_Memory To File\_2018\_180228